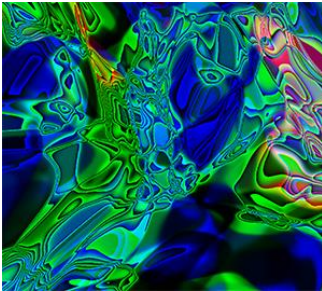
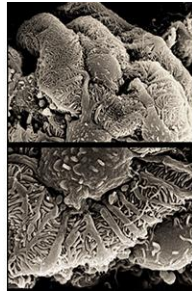


SCIENCE TO ART

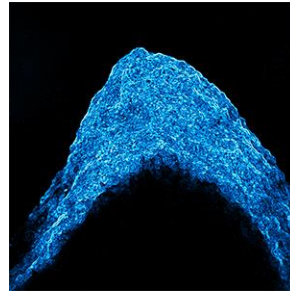
This is a great opportunity to highlight researchers or clinicians at your institution and showcase their research to the community.



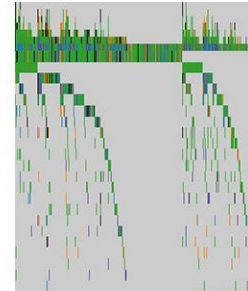
MRIGlobal



KU Medical Center



UMKC



Saint Luke's

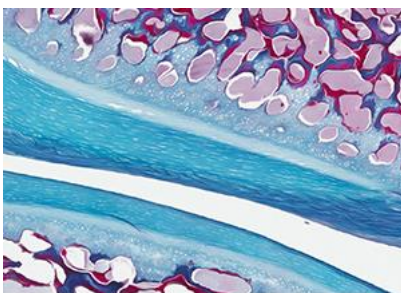
We need your help! For the fifth consecutive year, we're collecting scientific images from our stakeholders and turning selected images into art. Selected artwork will be auctioned on KCALSI's website and during the 2018 Science to Art silent auction held during our Annual Dinner. All proceeds will be donated to support STEAM (STEM + Arts) education in our community.

[Submit your artwork here!](#)

How the "Science to Art" Auction works:

1. Submit high-resolution artwork by completing [this online form](#) by Friday, April 27.
2. Collected artwork is reviewed by KCALSI and submitted to Kemper Museum curators.
3. Applicants whose artwork is selected will be notified mid-May.
4. Winning artwork will be:
 - a. Printed on various media.
 - b. Featured in online promotion and in the 2018 Annual Dinner video
 - i. **PLEASE NOTE:** By submitting artwork, the researcher is committing to one video production session in Kansas City on a date TBD.
5. Auctioned at the 2018 Annual Dinner on September 20th at the Arvest Bank Midland Theatre in Kansas City.

Please share this info with your colleagues and encourage them to submit.



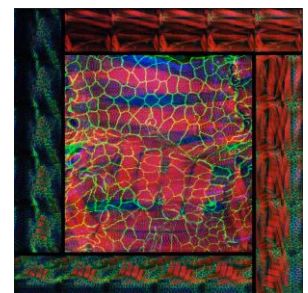
University of Missouri



Children's Mercy



Truman Medical Centers



K-State